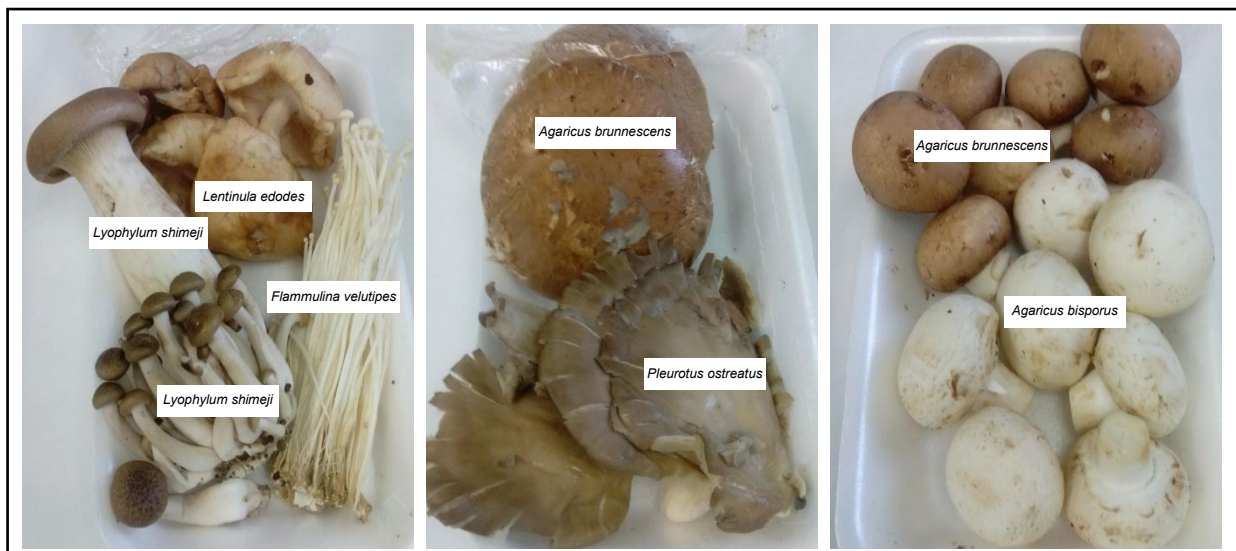


### Supplementary references:

1. Sakai Y, Hisauchi-Kojima K, Umino T, Atarashi K, Miyake S, Yoshizawa Y. Purification and characterization of the allergenic components of shimeji mushroom (*Tricholoma conglobatum*) spore for shimeji workers' hypersensitivity pneumonitis. *Journal of medical and dental sciences*. 2000 Mar;47(1):67-75.
2. Tsushima K, Fujimoto K, Yamazaki Y, Takamizawa A, Amari T, Koizumi T, et al. Hypersensitivity pneumonitis induced by spores of *Lyophyllum aggregatum*. *Chest*. 2001 Oct;120(4):1085-93.
3. Otsuji K, Ohara K, Nakamura M, Amazumi R, Higa C, Kakazu K, et al. [A case of anaphylaxis caused by enokitake (*Flammulina velutipes*) ingestion]. *Arerugi = [Allergy]*. 2015 Feb;64(1):63-7.
4. Shingaki T, Hiraguchi Y, Gen M, Yoshino S, Kumagai Y, Ebishima Y, et al. [A CASE OF HYPERSENSITIVITY REACTION TO ENOKITAKE (*FLAMMULINA VELUTIPES*) INGESTION]. *Arerugi = [Allergy]*. 2017;66(10):1240-3.
5. Venturini M, Lobera T, Blasco A, Del Pozo MD, Gonzalez I, Bartolome B. Occupational asthma caused by white mushroom. *Journal of investigational allergology & clinical immunology*. 2005;15(3):219-21.
6. Khakzad Z, Hedayati MT, Mahdian S, Mayahi S. Serum immunoglobulin E and immunoglobulin G reactivity to *Agaricus bisporus* proteins in mushroom cultivation workers. *Current medical mycology*. 2015 Jun;1(2):25-30.

### Supplementary image:



Supplementary figure: studied mushroom species.