

Expansion of a CD26^{low} effector TH subset and reduction of circulating levels of sCD26 in stable allergic asthma in adults

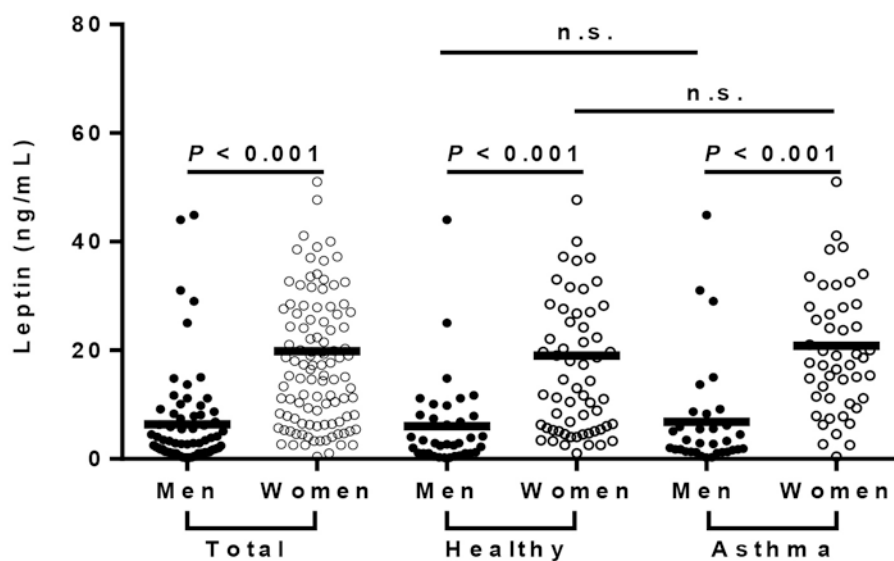


Figure S1. Serum leptin levels in allergic asthma according to gender. Leptin levels (ng/mL) according to gender in both healthy (n=97) and asthmatic (n=81) populations. Mann-Witney U statistic, numbers on the graph represent P-value.

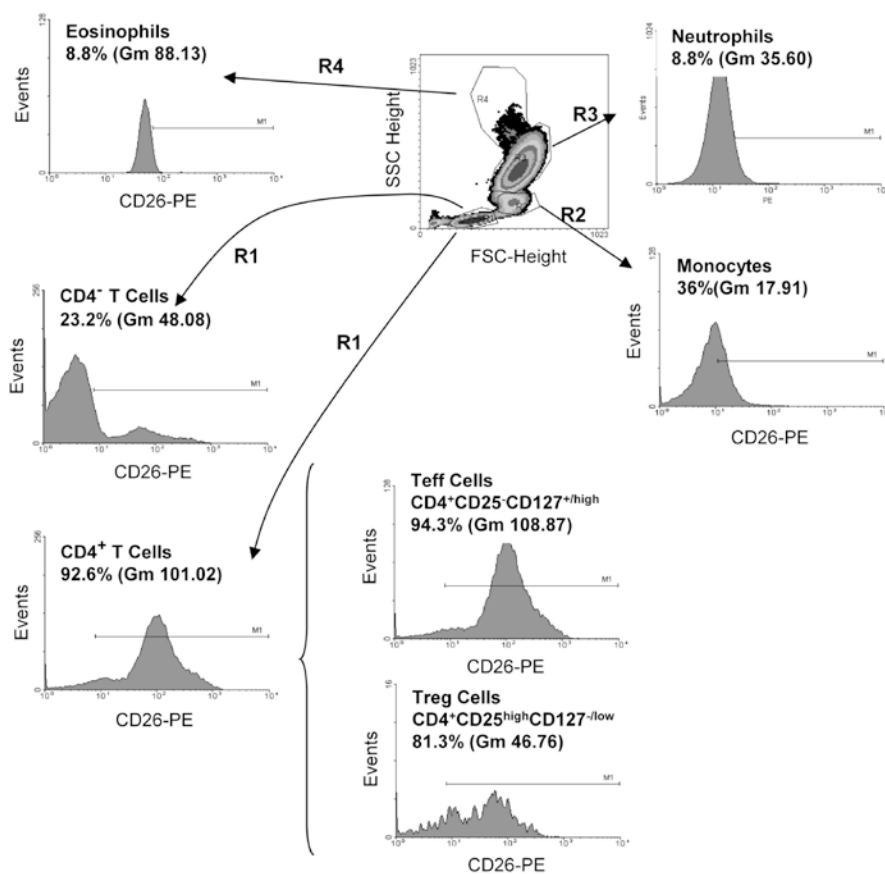


Figure S2. CD26 expression in major peripheral blood leukocyte subpopulations. Leukocytes was marked with CD4-FITC, CD25-PE-Cy7, CD127-AlexaFluor-647, CD26-PE or with isotype antibodies (IgG1κ-FITC, IgG1κ-PE-Cy7, IgGκ-Alexa 647 y IgGκ-PE). Dates are shown as dot plots “forward scatter” (FSC) versus “side scatter” (SSC), where different leukocyte subpopulations are represented (lymphocytes/R1, monocytes/R2, neutrophils/R3 and eosinophils/R4), and histograms, where mean fluorescence intensity (x-axis) is represented versus number of cells (y-axis) of every subpopulation (R1-R4). A representative result is shown.