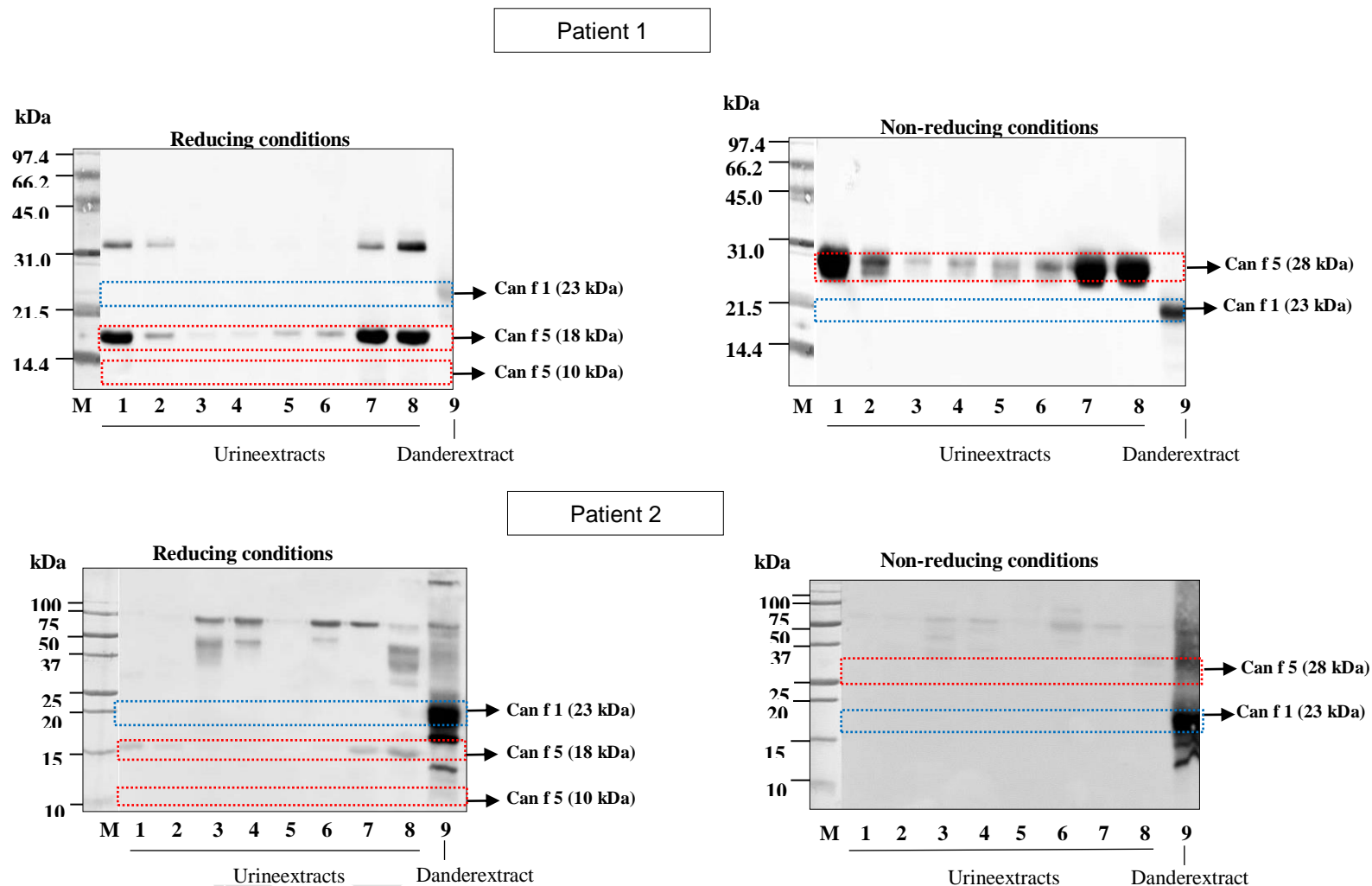


## SUPPLEMENTARY MATERIAL



**Figure 1. Allergenic profile of patients investigated by immunoblot.** Extracts were analyzed under reducing and non-reducing conditions. Bands corresponding to main allergens are highlighted: Blue box: Can f 1; Red box: Can f 5. In case of reducing conditions the band of Can f 5 is divided in two bands (10 and 18 kDa)<sup>3</sup>. Lane M: MW marker proteins; Lanes 1-8: urine extracts; Lane 9: dander extract.