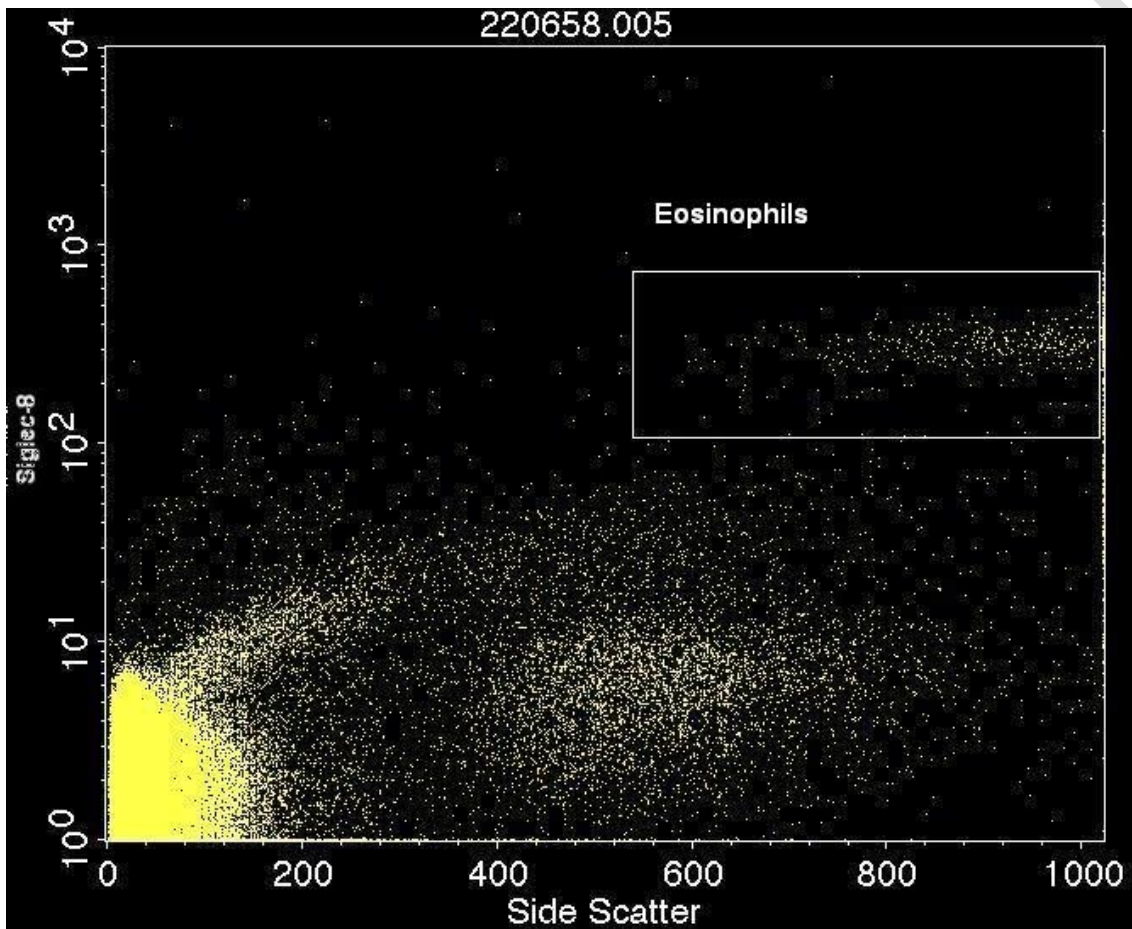


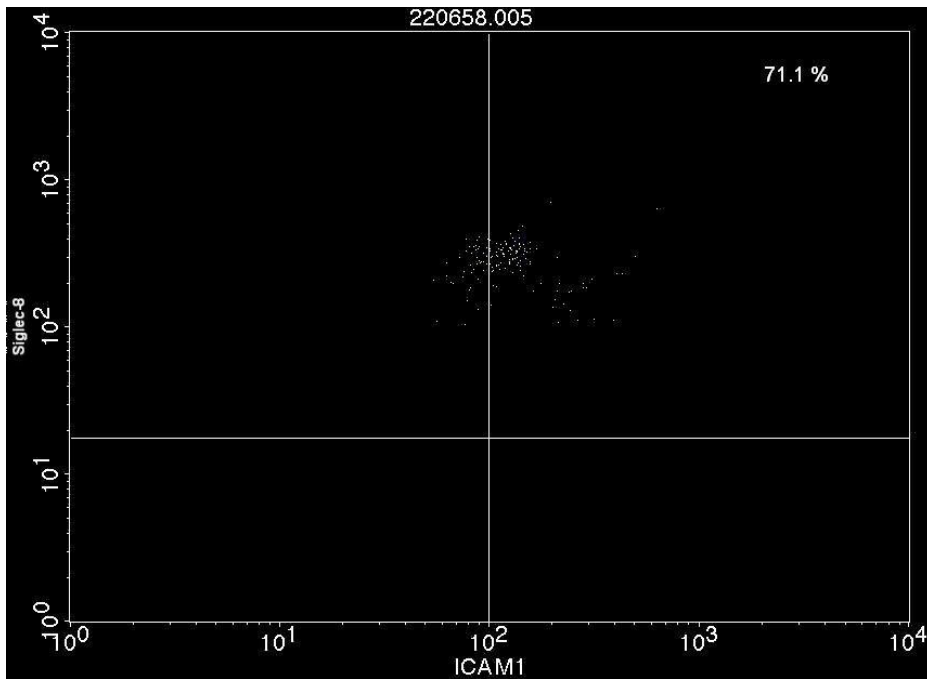
## SUPPLEMENTARY MATERIAL

**Figure 1S.** The image represents the selection of eosinophils in flow cytometry. The eosinophils were selected by the membrane expression of the Siglec-8 molecule and by the parameters of cellular complexity (SSC).



**Figure 2S.** Two examples of studies by cytometry of ICAM-1 expression in eosinophils of patients with EoE are showed in the figure. The image of patient A corresponds to a non-active EoE and high expression of ICAM-1 (71.1 %), while image B corresponds to a patient with active EoE and with low expression of ICAM-1 (9.8 %).

**A**



**B**

