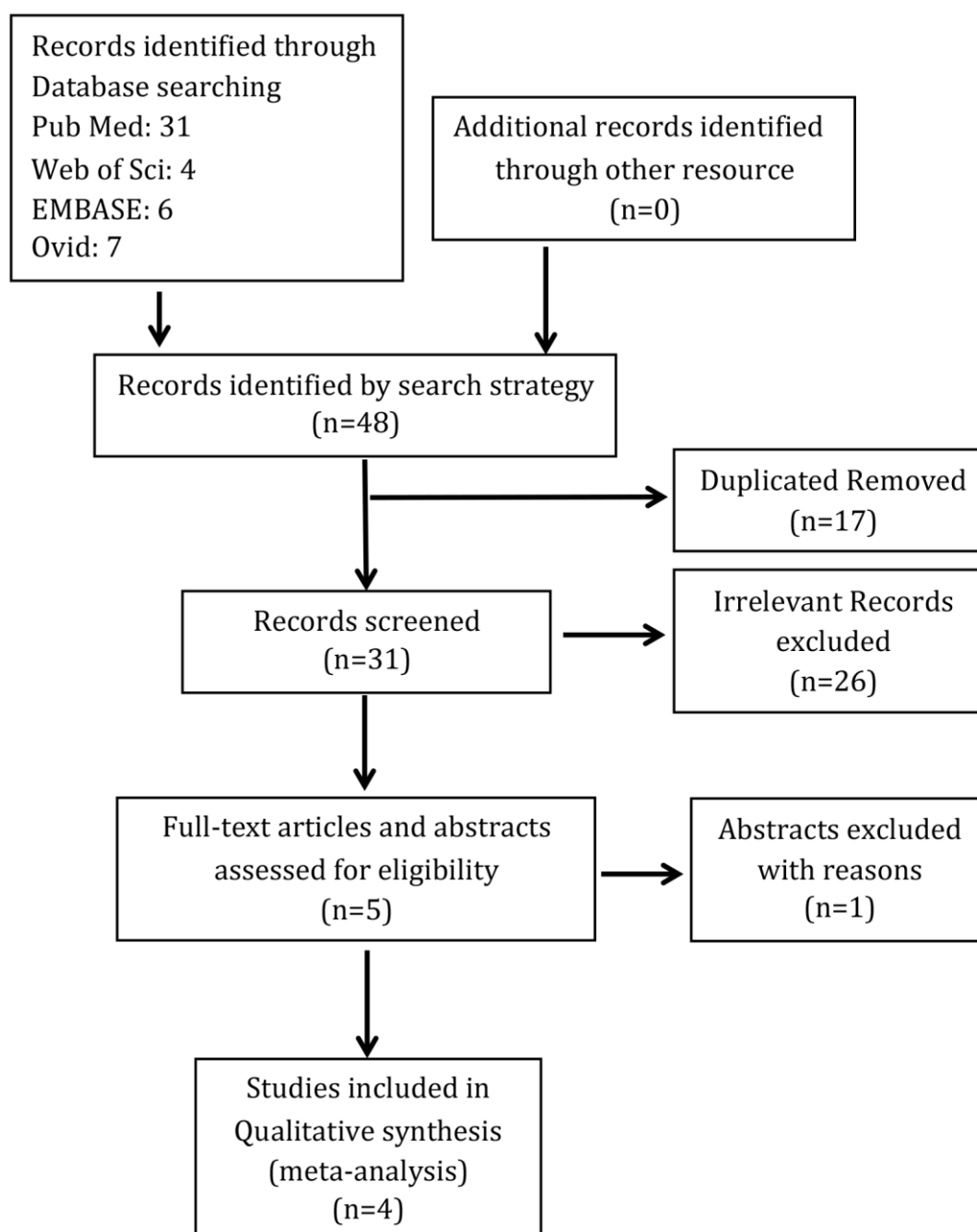
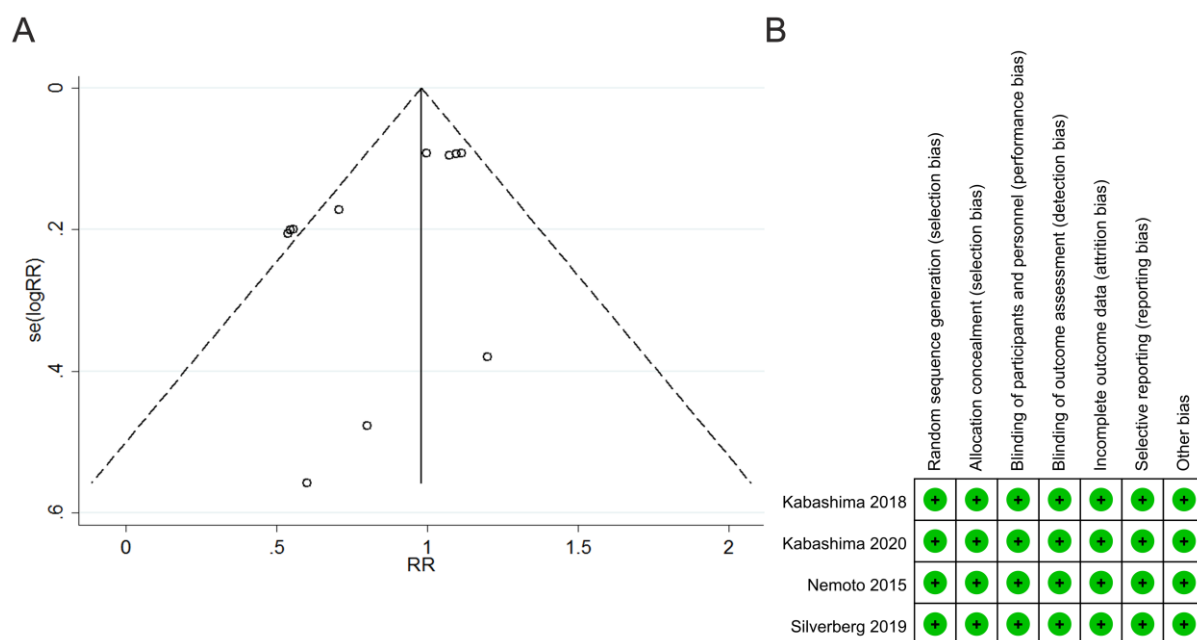


**SUPPLEMENTARY MATERIAL**

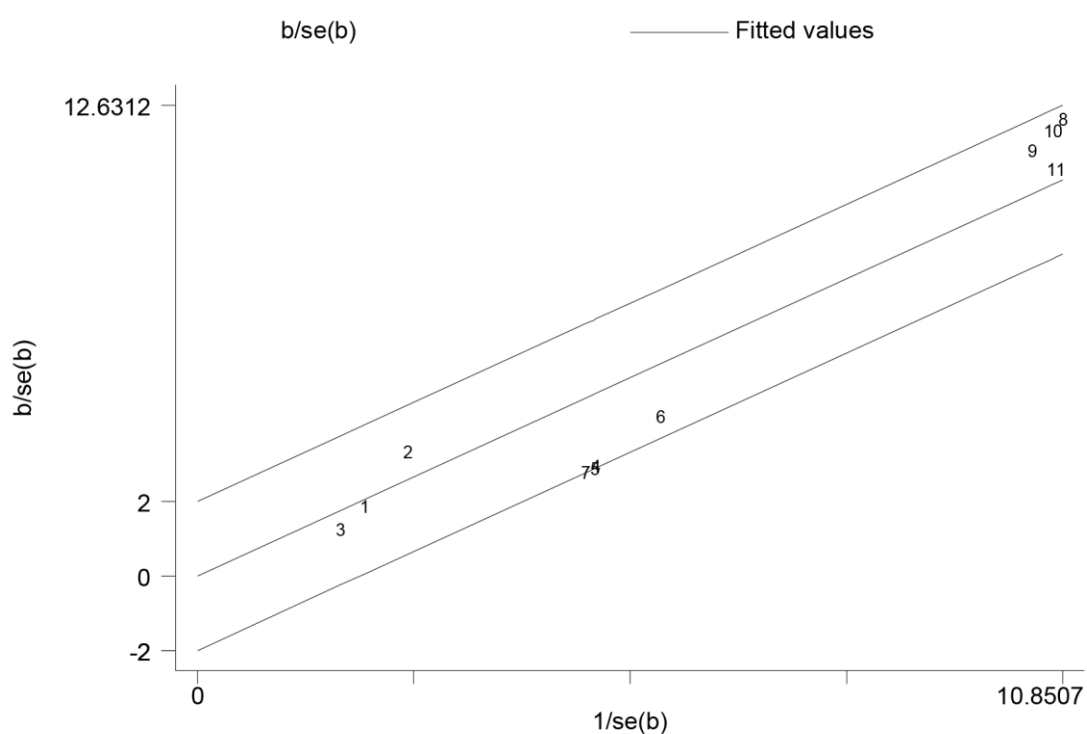
Supplementary Figure 1. Flow diagram of study selection. A total of 48 potentially relevant studies were collected, of which 4 RCTs were included in the meta-analysis.



Supplementary Figure 2. Risk of bias summary for each included study.(A) Risk of bias summary for each included study.(B) Begg funnel plot. Deviation from such funnel-like distribution is able to point out the bias of the studies. Both the funnel plot and Egger test showed no significant evidence of bias in the publication.



Supplementary Figure 3. Galbraith radial plot. The figure shows the contribution of results from the patient groups treated with different doses of Nemolizumabin the different studies to the heterogeneity of safety of treatment. The studies included are: Phase I 0.3mg/kg q4w (1), Phase I 1.0mg/kg q4w (2), Phase I 3.0mg/kg q4w (3), Phase II 0.1mg/kg q4w (4), Phase II 0.5mg/kg q4w (5), Phase II 2.0mg/kg q4w (6), Phase II 2.0mg/kg q8w (7), Phase IIB 10mg q4w (8), Phase IIB 30mg q4w (9), Phase IIB 90mg q4w (10), Phase III 60mg q4w (11). No subgroup was found to be the main cause of the heterogeneity.



Supplementary Figure 4. Forest plot of rate of adverse events (AE) and severe adverse events (SAE) in 3 RCTs. (A) AE rates and RR of AE rates between Nemolizumab- and placebo-treated patients. (B) SAE rates and RR of SAE rates between Nemolizumab- and placebo-treated patients. Diamonds stand for the meta-analysis summary effect estimate. Blue dots represent the RR and horizontal lines represent 95% CIs of the RR estimates.

