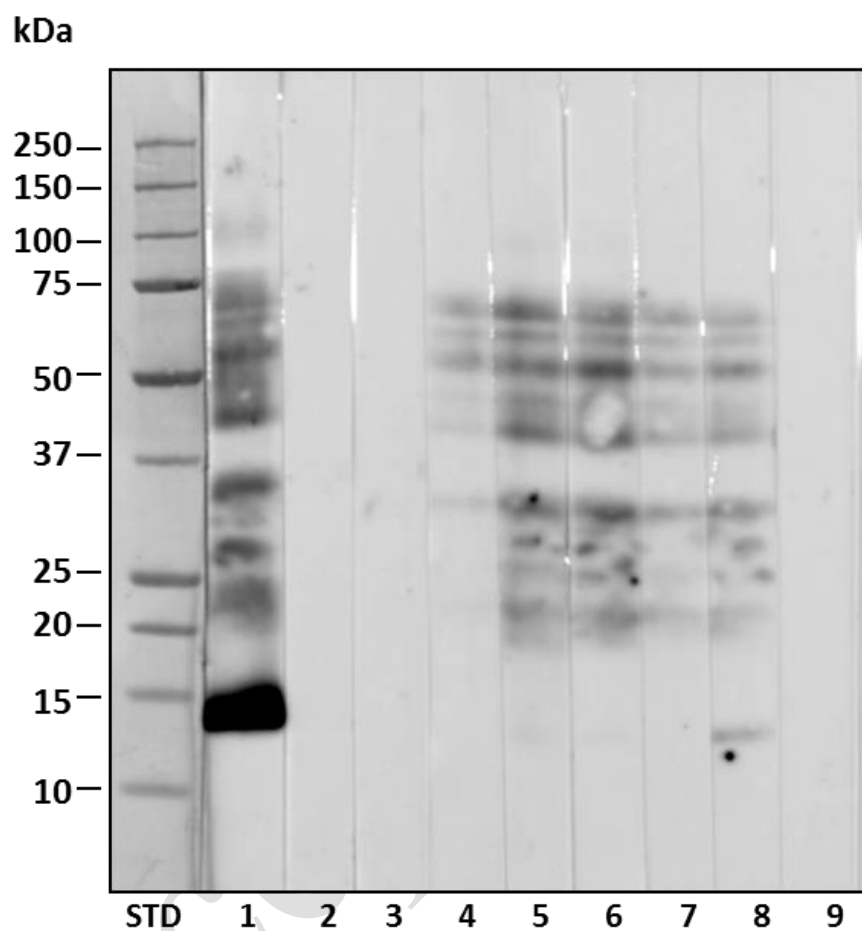


# SUPPLEMENTARY MATERIAL

**Figure 1.** Immunoblot inhibition assay with other pollen extracts. Solid phase 100 µg of lyophilized *V. vinifera* pollen per lane. STD: Precision Plus Protein™ All Blue Prestained Protein Standard (Bio-Rad); 300 µg of the inhibitory extract were used in each lane.



- 1: No inhibition
- 2: *Vitis vinifera*
- 3: *Phleum pratense*
- 4: *Olea europea*
- 5: *Plantago lanceolata*
- 6: *Chenopodium album*
- 7: *Salsola kali*
- 8: *Cupressus arizonica*
- 9: Negative control (nonspecific binding)

**Figure 2.** Immunoblot inhibition assay with purified profilin. Solid phase 20  $\mu$ g of *V. vinifera* pollen protein per lane. STD: Precision Plus Protein™ All Blue Prestained Protein Standard (Bio-Rad); lane 1: no inhibition; lane 2: inhibition with 1  $\mu$ g of purified profilin (Pho d 2). The band of 14.2 kDa corresponding to *V. vinifera* pollen profilin was inhibited with 1  $\mu$ g of purified Pho d 2 (red arrow).

