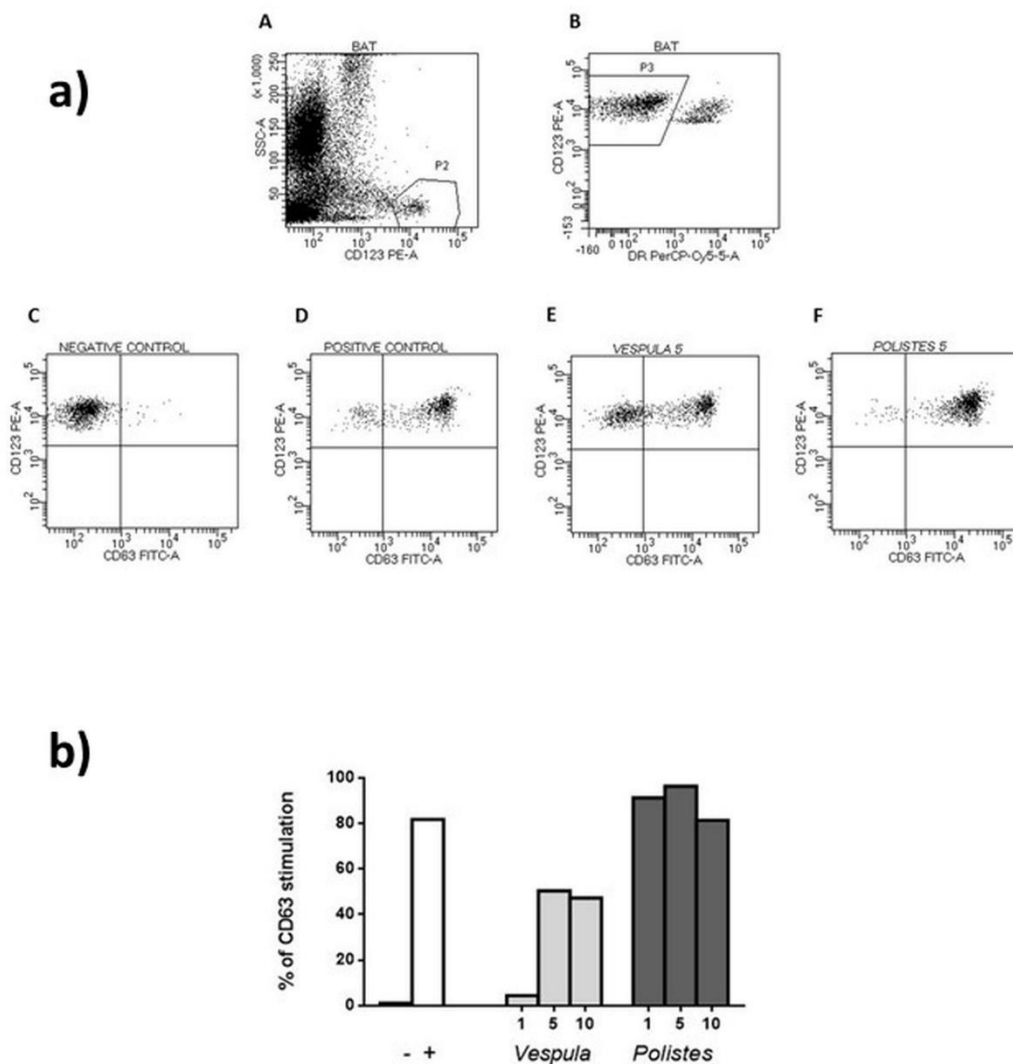


SUPPLEMENTARY MATERIAL

Supplementary Figure 1. Basophil Activation Test.

1a) Basophils were identified in whole blood as low SSC/CD123+/HLA-DR-(A,B). Dot-plots of CD63 expression after *in-vitro* stimulation with PBS (C), anti-IgE antibody (D), *Vespula spp.* (5 μ g/mL; E) and *Polistes dominula* (5 μ g/mL; F). Activated basophils are expressed as the percentage of CD63+ cells. 1b) Percentage of CD63 basophils after challenge with 1-5-10 μ g/ml of each venom.



Supplementary Figure 2. Recognition of a) sIgE (green) and b) sIgG4 (red) to the study patient against different concentrations of *Vespula spp.* and *Polistes dominula* venoms printed on microarrays. c) Design of microarray's matrix with positive controls (black), negative controls (white), *Vespula spp.* (blue, striped pattern), and *Polistes dominula* (yellow, dotted pattern). Appears in parentheses if the venom was printed in PPB or PBS.

