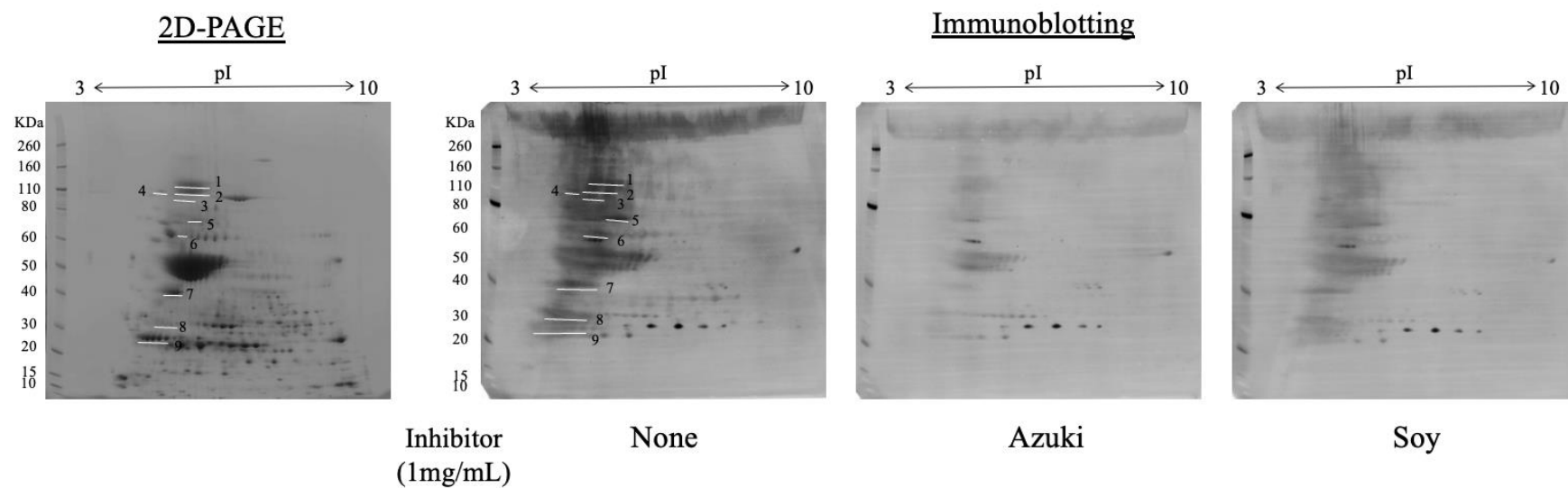


SUPPLEMENTARY MATERIAL

Figure S1. Proteins from azuki beans were isolated using 2D-PAGE (left) and subjected to immunoblotting and inhibition tests with azuki beans and soybeans (three pictures on the right). The white lines show proteins for which azuki beans inhibited immunoglobulin E antibody binding. Numbers correspond to the protein numbers shown in Supplementary Table S1.



Soy, soybean; azuki, azuki bean.